

MEN-3410

Managed Layer 2 Access Gigabit Ethernet Switch
8-port 10/100/1000Base-T + 2-slot 100FX/Gigabit



Description

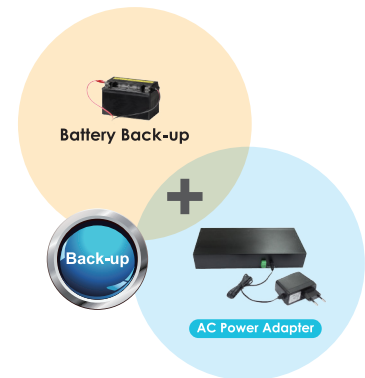
Volktek's MEN-3410, the Layer 2 managed access switch is solely deigned for village subscribers to provide a scalable, cost-effective and future-proof Ethernet connectivity and fulfill the network requirements of families and small communities. Providing the ideal combination of affordability and excellent switching capabilities, the solution helps to bring digitalization for business organization. Designed with rich and advanced software features, the switch delivers maximum performance and enables service providers to operate their network more efficiently.

Capable of connecting up to 8 downlink network devices with 8-10/100/1000Mbps copper ports, the MEN-3410 is a perfect cost effectcve solution for service providers who want to offer high-value Ethernet services for low density subscriber base with medium ARPU. Equipped with dual 100/1000 multi-rate SFP uplinks which can be configured as ring ports to provide link redundancy in Gigabit fiber based ring architecture networks, or daisy chain to extend distance. Service providers can take complete advantage of this small but powerful package to offer a truly high-speed network eliminating the need to manually configure policies on the switch, saving valuable time and effort, and avoids unnecessary OPEX.

Features Highlight

Convenient and Cost-effective Power Solution

While deploying on-site, DC power adapter provides a convenient solution especially in the event adapter failure, service providers can quickly and easily replace the faulty adapter without interrupting the network. Thus, eliminating a time consuming and costly RMA procedure of the switch.



Non-stop Network with Redundant Power

Each time a power failure arises, the subscribers suffer from disrupted network and this in turn translates into loss of revenue, As one of the most innovative solutions for redundant power, the MEN-3410 is built with AC power input, DC jack and battery backup options to ensure that the device and the network is always available.

Multicast Video Service Support

Deploying multicast applications such as IPTV has never been easier than before with comprehensive multicast traffic function such as IGMP snooping in the MEN-3410. The MEN-3410 supports applications that use multi-traffic in large scale across the network, saves network bandwidth, reduces operational burden and enhances the overall network performance.

Comprehensive QoS Mechanisms to Assign Priority

The MEN-3410 has comprehensive QoS mechanisms that assign priority to applications and send only specific dedicated traffic to them. In addition, bandwidth management functions of the switch allocate greater bandwidth for mission-critical communications. With increased control, administrators can prevent unpredictable errors and utilize the bandwidth more effectively.

Efficient Network Monitoring and Management Tools

The MEN-3410 features SNMP and RMON, industry standard management protocols, which give enhanced approaches for real-time traffic analysis, remote monitoring and management of individual switches, this avoids high OPEX with increasing efficiency and performance. The switch is assimilated with intelligent e-mail alarm system and SNMP Trap functionality to detect system abnormality along with faster troubleshooting. In addition to this, the device maintains a system log for the subsequent analysis of abnormal and unwanted flaws.

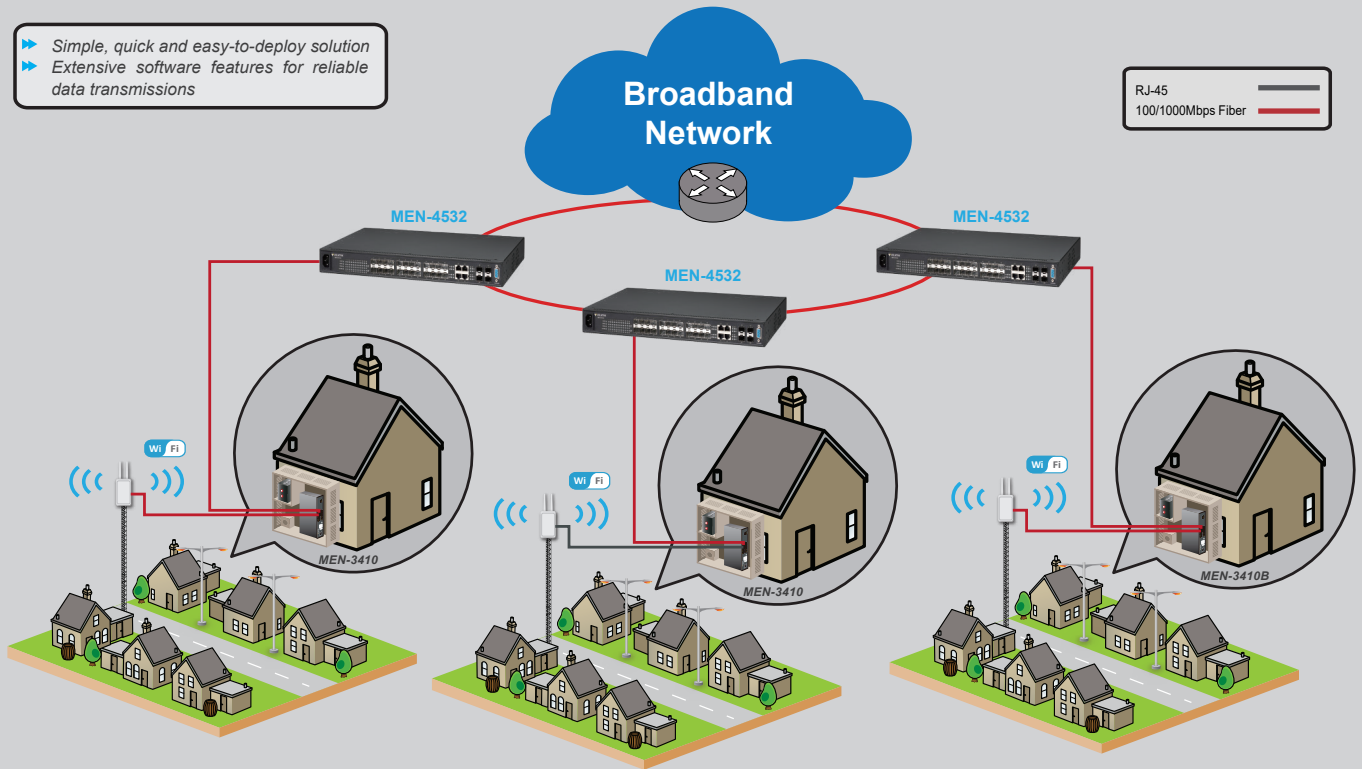
Redundant Ring for Faster Network Recovery

Even few seconds of missed communications due to link failure can cause inconvenience and recovering it becomes very critical. Considering these threats, the MEN-3410 is designed with various ring protocols like STP, RSTP which provides redundant connectivity that ensures non-stop transmission of real-time Ethernet data.

Application

High-quality data services in a small but powerful package

- ▶ Simple, quick and easy-to-deploy solution
- ▶ Extensive software features for reliable data transmissions



Aggregation Level
 MEN-4532: 20-slot 100FX/Gigabit SFP, 4-port 100/1000 Combo + 4-slot Gigabit SFP Managed L2+ Aggregation Gigabit Ethernet Switch

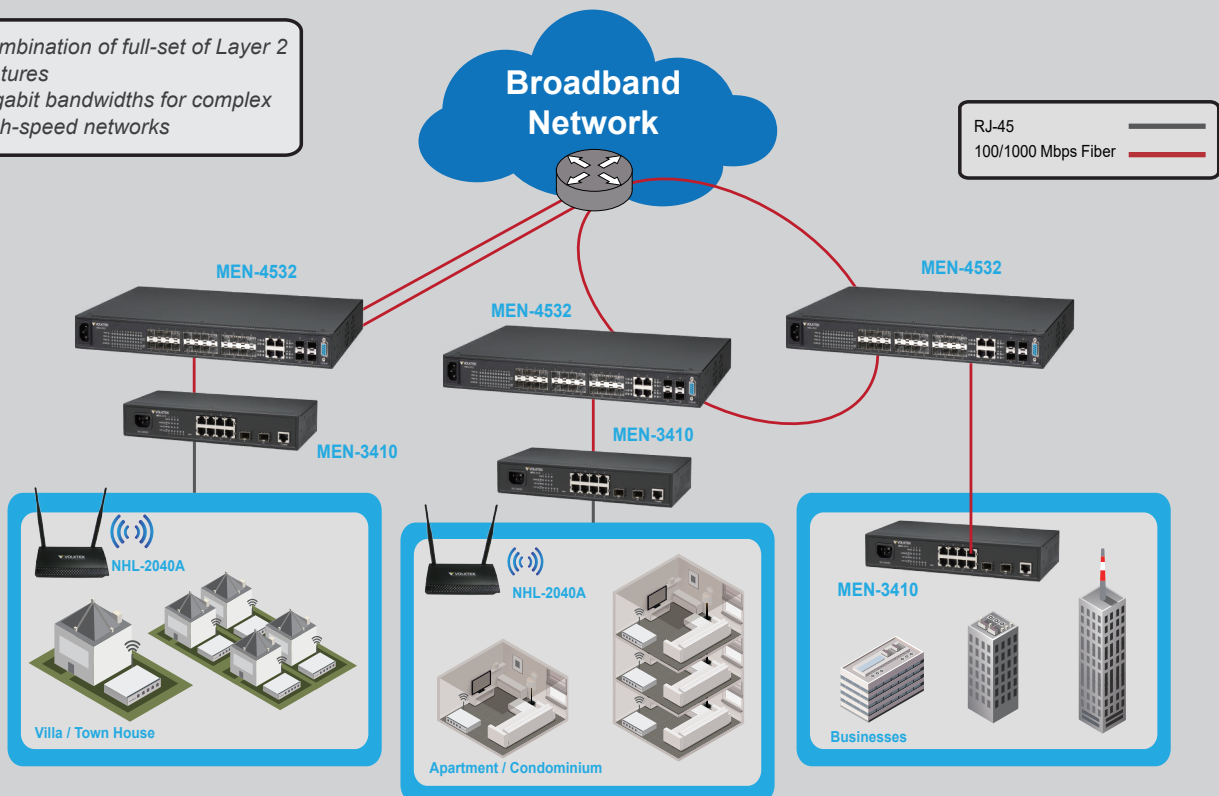
Access Level
 MEN-3410: 8-port 10/100/1000Base-T, 2-slot 100FX/Gigabit SFP Managed L2 Access Gigabit Ethernet Switch

Access Level
 MEN-3410B: 8-port 10/100/1000Base-T, 2-slot 100/1000 SFP and Built-in 12VDC Battery Charge Managed L2 Access Gigabit Ethernet Switch

Applications

Experience superior performance and massive bandwidths that deliver remarkable quality services

- ▶ Combination of full-set of Layer 2 features
- ▶ Gigabit bandwidths for complex high-speed networks



Specifications

Standards

IEEE 802.3	10Base-T
IEEE 802.3u	100Base-TX/FX
IEEE 802.3ab	1000Base-T
IEEE 802.3z	1000Base-SX/LX
IEEE 802.1d	STP
IEEE 802.1w	RSTP
IEEE 802.3ad	Link Aggregation
IEEE 802.3x	Flow Control
IEEE 802.1p	Class of Service
IEEE 802.1q	VLAN Tagging
IEEE 802.3az	Energy Efficient Ethernet

Network Management

Configuration	Command Line Interface, Telnet, Web GUI, Syslog, SNMP v1/v2c, Management VLAN, SNTP, Firmware Upgradable, Configuration Upload/Download
VLAN	IEEE 802.1Q Tag-based VLAN, Port Isolation
Traffic Control	IGMP snooping, QoS, Rate Limitation, Storm Control, Port Isolation, STP, RSTP, LLDP, LACP
Diagnostics	LED status, SNMP trap, E-mail alarm, SFP DDMI, Port Mirroring, RMON, Port Statistic

Power

Input Voltage	100-240VAC 15V/2A Power DC Jack
Redundant Power	12VDC Battery Back-up
System Voltage Monitor	Present
System Power Consumption	10W
Surge Protection	Present

Interface

Ports	2-slot 100FX/GbE SFP 8-port 10/100/1000Base-T
-------	--

Mechanical and Environment

Operating Temperature	0°C~50°C
Storage Temperature	-20°C~70°C
Operating Humidity	10 to 80% RH (non-condensing)
Storage Humidity	5 to 90% RH (non-condensing)
Weight	1.17kg
Dimension (WxHxD)	268 x 44 x 128mm (WxHxD)

Ordering Information

MEN-3410	Managed L2 8-port 10/100/1000, 2-slot 100/1000 SFP Switch, w/ 100-240VAC Power Supply
MEN-3410B	Managed L2 8-port 10/100/1000, 2-slot 100/1000 SFP Switch, w/ 100-240VAC Power Supply and Built-in 12VDC Battery Charge
MEN-3410AB	Managed L2 8-port 10/100/1000, 2-slot 100/1000 SFP Switch, w/ 15VDC Adapter and Built-in 12VDC Battery Charge
MEN-3410D	Managed L2 8-port 10/100/1000, 2-slot 100/1000 SFP Switch, w/ 48VDC Power Supply

Optional Accessories

FPM-107	100Base-FX Multi-mode SFP, 2Km
FPM-107-30	100Base-FX Single mode SFP, 30Km
GBM-132	100Base-FX Bi-di Single Mode SFP Module, 20Km
GBM-104	1000Base-SX 1.25G, Multi-mode SFP, 500m
GBM-104-2	1000Base-SX 1.25G, Multi-mode, 3.3V, 1310nm, 2Km
GBM-104-10	1000Base-LX 1.25G, Single mode SFP, 10Km
GBM-123	1000Base-LX Bi-di Single Mode SFP Module, 10Km

*Specifications subject to change without notice.

Dimension

